



RÔTISSERIE

MasterFlame™ MF975-6E

DESIGN

Rotisol's traditional rustic-style rotisserie, the MasterFlame, is an attractive show-piece for any restaurant or kitchen and is used by chefs in Michellins star restaurants around the world.

The visible flames from Rotisol's patented burners spread up the porcelain wicks creating a spectacular visual that can be seen through the front and side glass doors.

Spits are driven by an elegant system of chains and pulleys, rotating at 2 ½ times per minute, ensuring perfectly cooked, self-basting poultry, meat, vegetables and fish.

The optional Vertical Spit System with its choice of eight hanging accessories expands the menu possibilities even more and adds additional visual appeal.

FEATURES






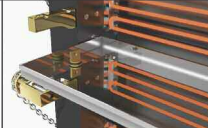
- ☐ Reinforced and anti warping heating element
- ☐ Tempered K-glass front and side doors
- ☐ Decorative roof included
- ☐ Pre-installed vertical spit system
- ☐ Independent motor for each spit
- ☐ Equipped with bottom drip tray with built-in drainage
- ☐ Powerful halogen lamps
- ☐ Delivered with 6 prongless spits (CUI9)
- ☐ Base on casters with brakes

TECHNICAL DETAILS

Overview of some of the standard features.



MF975-6E-LUX
Black porcelain enamel and brass

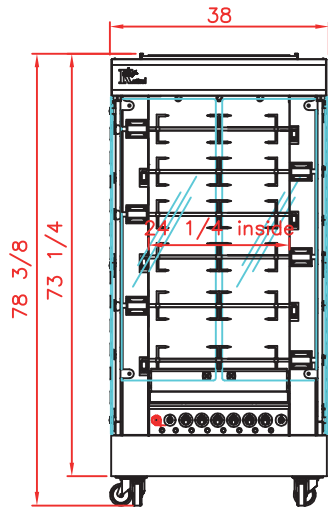
	Emergency stop button type «punch» easily accessible.		Visible rustic pulleys and drive chains for added front-of-house appeal		Pre-installed vertical spit system allows for vertical cooking
	Reinforced heating elements with stainless steel holders to keep them in place and removable stainless steel panels for easy cleaning.		Knobs in brass or chrome finish.		Middle drip pan allows separation of products to prevent cross-contamination

ACCESSORIES

A wide variety of accessories are available. Please consult us. See video of available [accessories](#) and of [vertical spit system](#) online.

CUI9 Anti-cutting prongless V-spit.		BP9 Chicken spit.		BRC9 Rectangular basket spit.	
BS9 Spit for ham / turkey.		BRRO9 Roast-clamp spit.		BA9 Lamb/suckling-pig spit.	
BCR9 Spatchcock chicken basket.		DEC Spit mover.		BPOR9 Porchetta spit.	

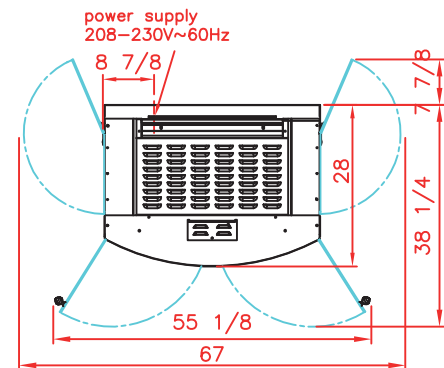
Front view
Rotisserie with roof



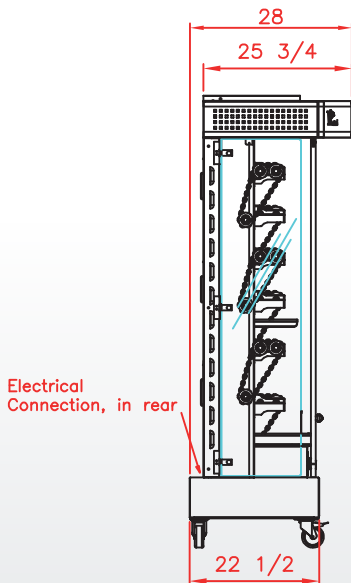
← MasterFlame

4 securit glass doors
"K" system

Top view
Rotisserie with roof



Side view
Rotisserie with roof



Revised :
September 2021

SPECIFICATIONS

Capacity roasted chickens	12/18 chickens
Power supply	208-240V-60Hz ; 3 Phases + Earth
Electrical power	74 Amps ; 26,5 kW
Weight and size (HxDxW)	715 Lbs ; 78 1/2 x 29 1/2 x 38 inches
Shipping weight and size	830 Lbs ; 83 1/2 x 30 x 42 1/8 inches
Warranty	1 year parts and labor



MF975-6E-SS
Stainless steel and chrome

DISTRIBUTOR / AGENT